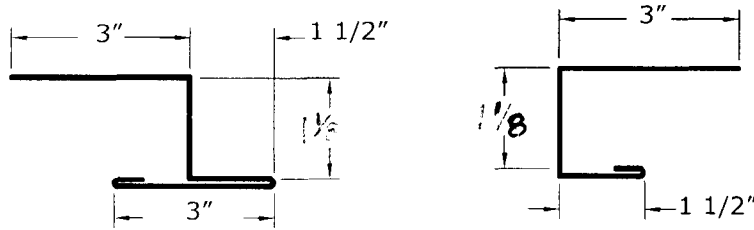




WESTERN STATES DECKING, INC.

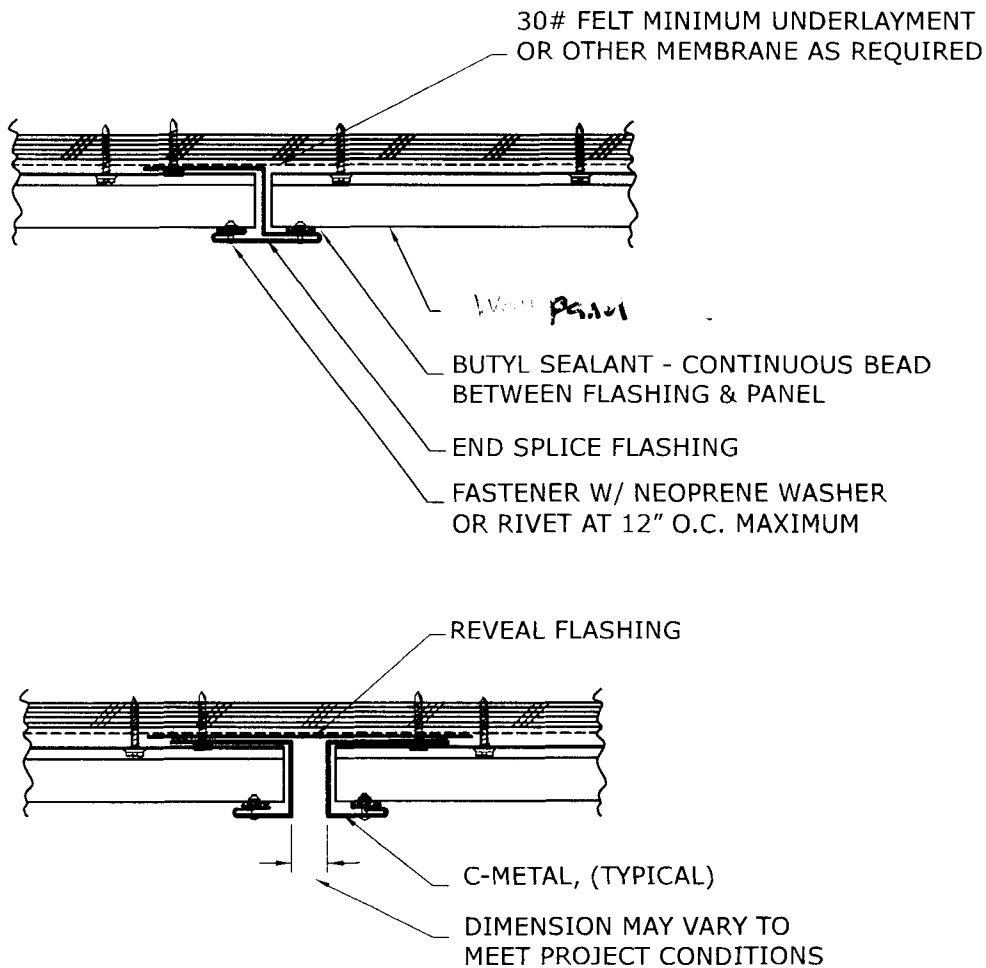
901 W. Watkins • Phoenix, AZ 85007 • (602) 495-0048 • FAX: (602) 261-7726

Soffit End Splice



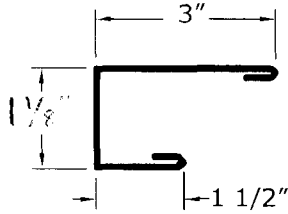
End Splice

C-Metal

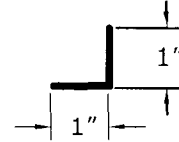




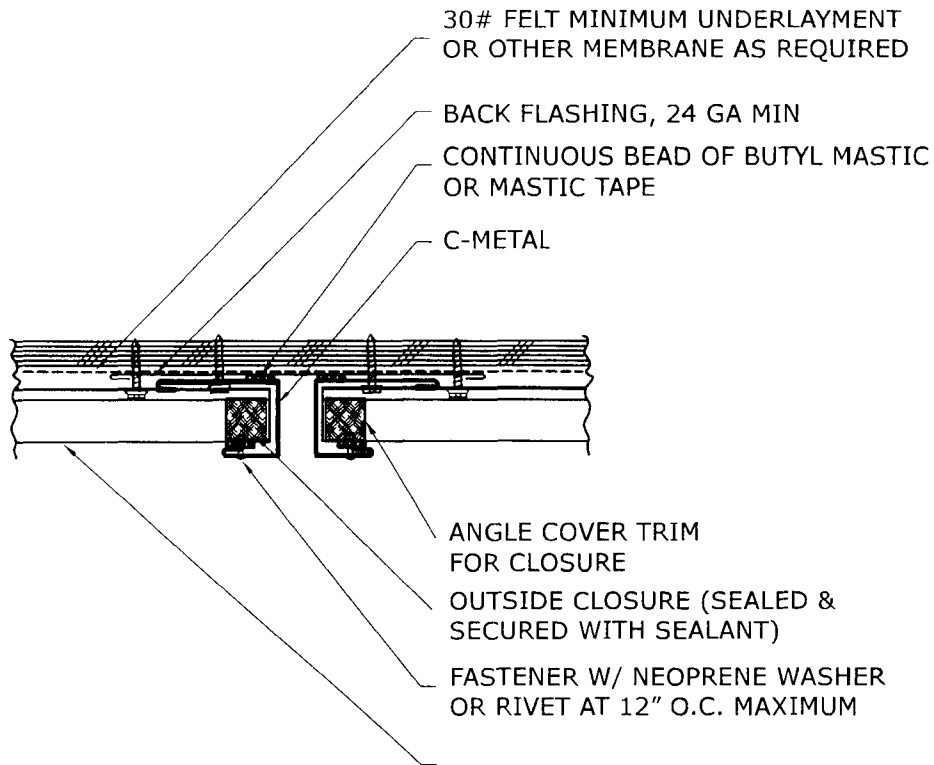
Horizontal End Splice



C-Metal



Cover Trim

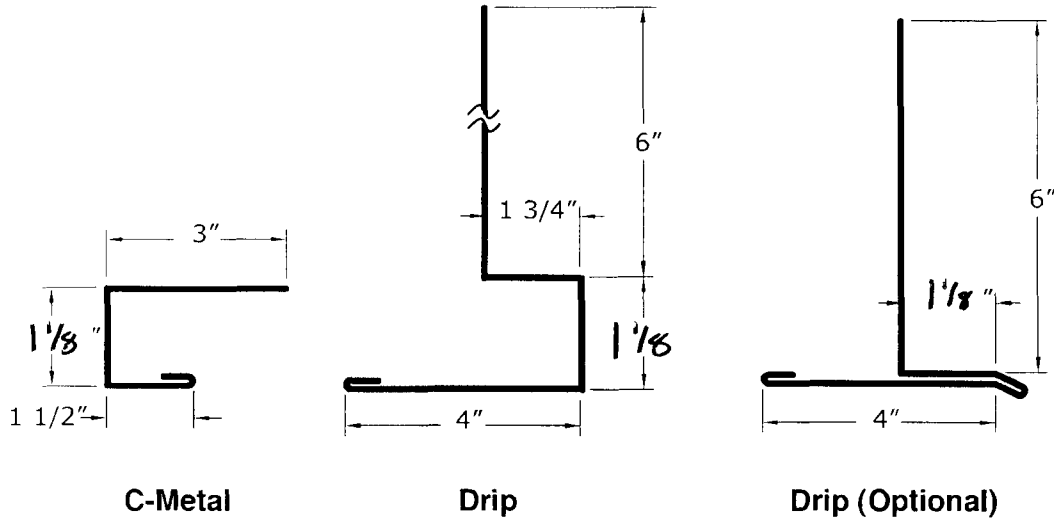




WESTERN STATES DECKING, INC.

901 W. Watkins • Phoenix, AZ 85007 • (602) 495-0048 • FAX: (602) 261-7726

Drip/Soffit Flashing

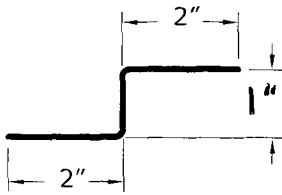




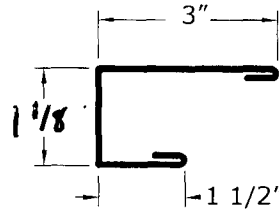
WESTERN STATES DECKING, INC.

901 W. Watkins • Phoenix, AZ 85007 • (602) 495-0048 • FAX: (602) 261-7726

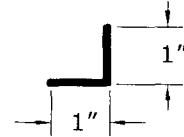
End Wall



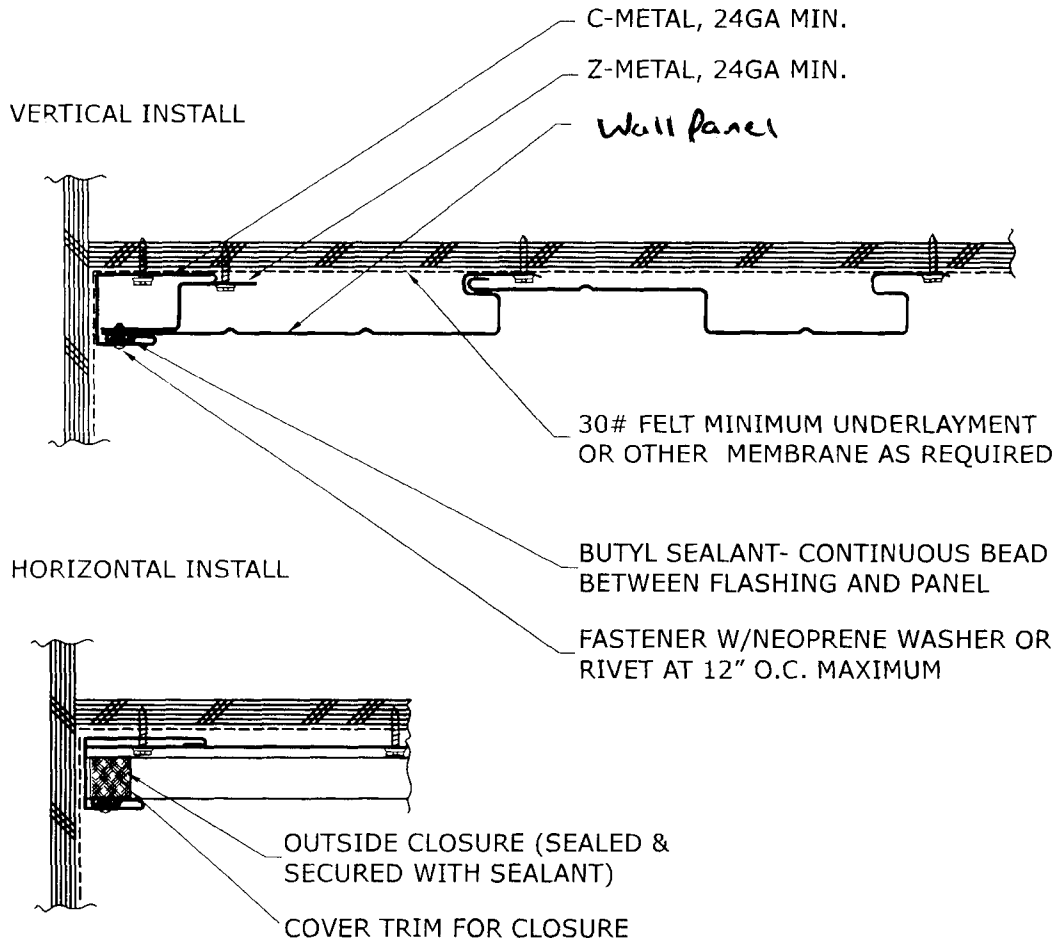
Z-Metal



C-Metal



Cover Trim

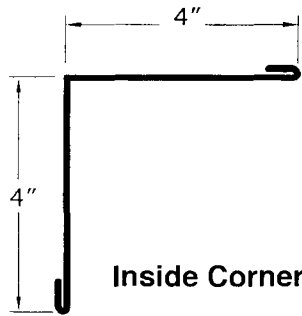




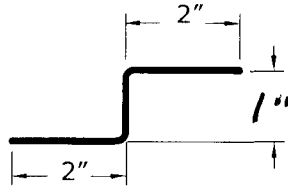
WESTERN STATES DECKING, INC.

901 W. Watkins • Phoenix, AZ 85007 • (602) 495-0048 • FAX: (602) 261-7726

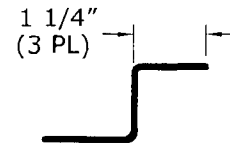
Inside Corner



Inside Corner

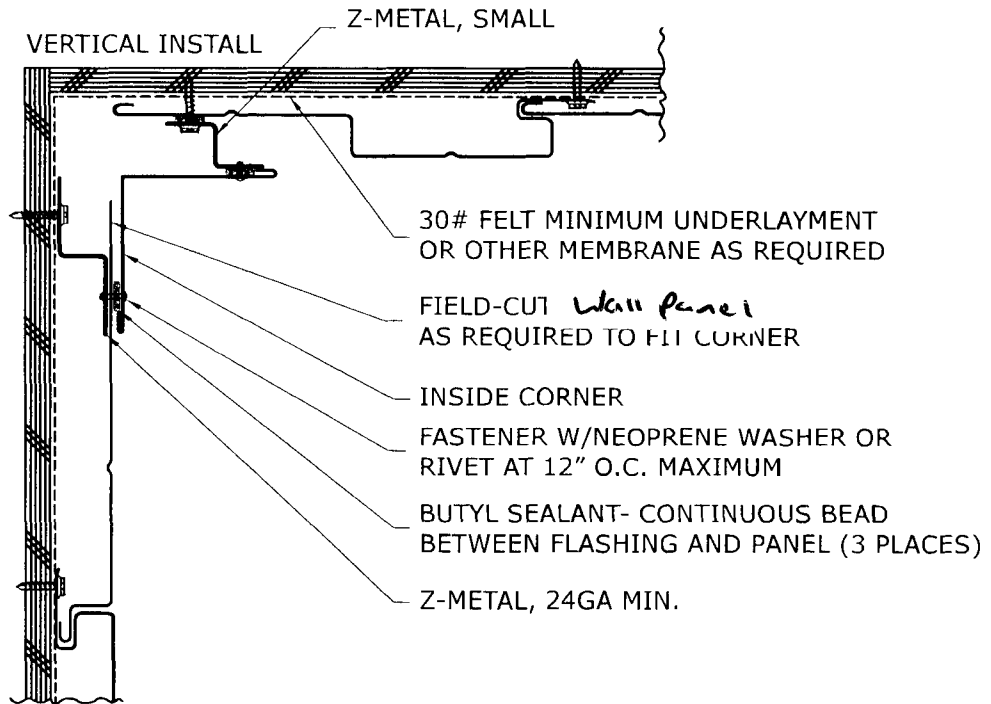


Z-Metal

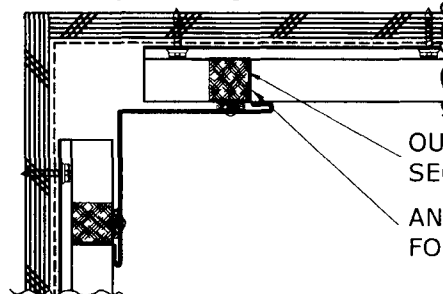


Z-Metal, Small

DETAIL SHOWN WITH BOTH FULL AND REVEAL PANEL OPTIONS.



HORIZONTAL INSTALL



OUTSIDE CLOSURE (SEALED & SECURED WITH SEALANT)

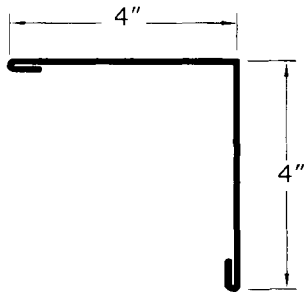
ANGLE COVER TRIM FOR CLOSURE



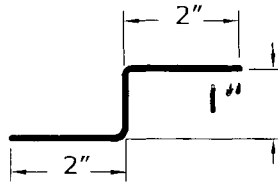
WESTERN STATES DECKING, INC.

901 W. Watkins • Phoenix, AZ 85007 • (602) 495-0048 • FAX: (602) 261-7726

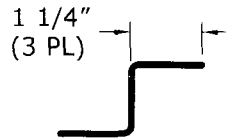
Outside Corner



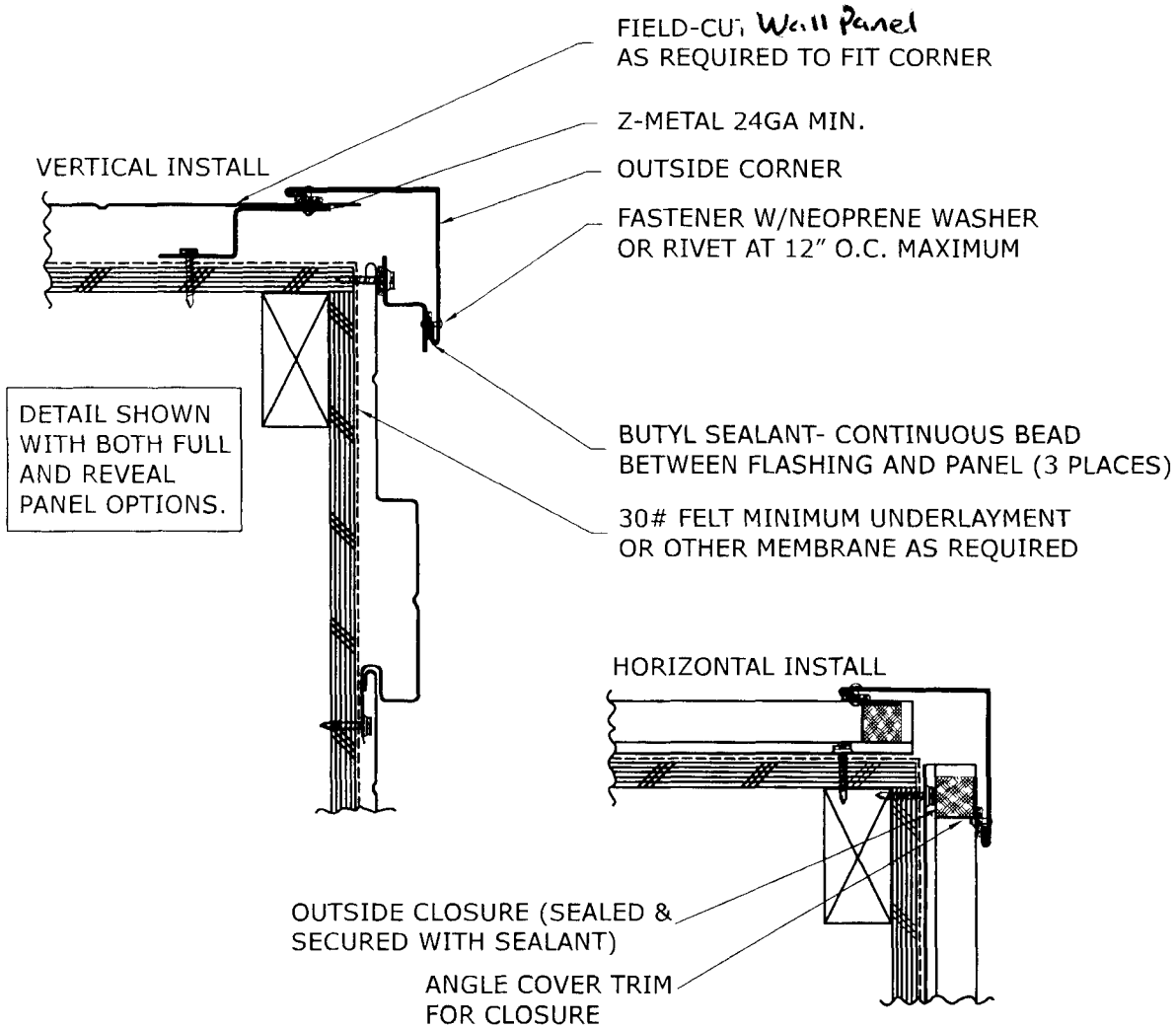
Outside Corner



Z-Metal



Z-Metal, Small

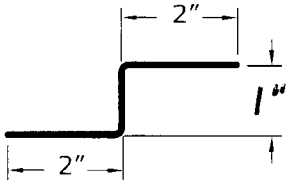




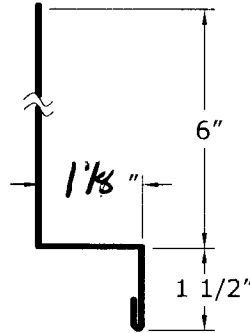
WESTERN STATES DECKING, INC.

901 W. Watkins • Phoenix, AZ 85007 • (602) 495-0048 • FAX: (602) 261-7726

Sill/ Vertical End Splice

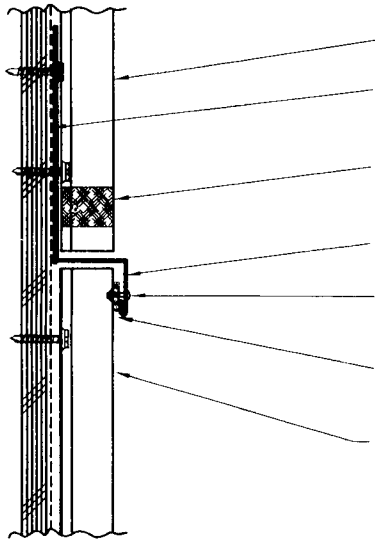


Z-Metal



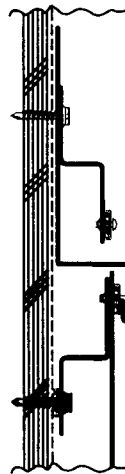
End Splice/ Sill

VERTICAL INSTALL



- WALL PANEL
- 30# FELT MINIMUM UNDERLAYMENT OR OTHER MEMBRANE AS REQUIRED
- INSIDE CLOSURE (SEALED & SECURED WITH SEALANT)
- END SPLICE/SILL FLASHING
- FASTENER W/NEOPRENE WASHER OR RIVET AT 12" O.C. MAXIMUM
- BUTYL SEALANT- CONTINUOUS BEAD BETWEEN FLASHING AND PANEL
- PS-12 WALL PANEL OR OTHER EXTERIOR MATERIAL (STUCCO, ETC)

HORIZONTAL INSTALL

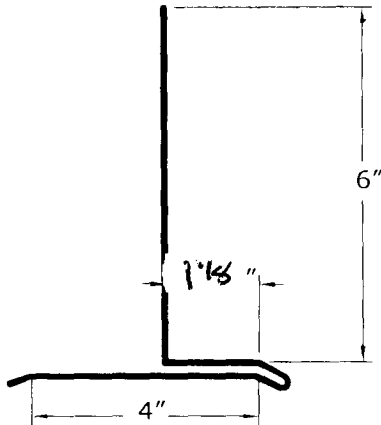




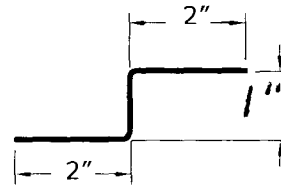
WESTERN STATES DECKING, INC.

901 W. Watkins • Phoenix, AZ 85007 • (602) 495-0048 • FAX: (602) 261-7726

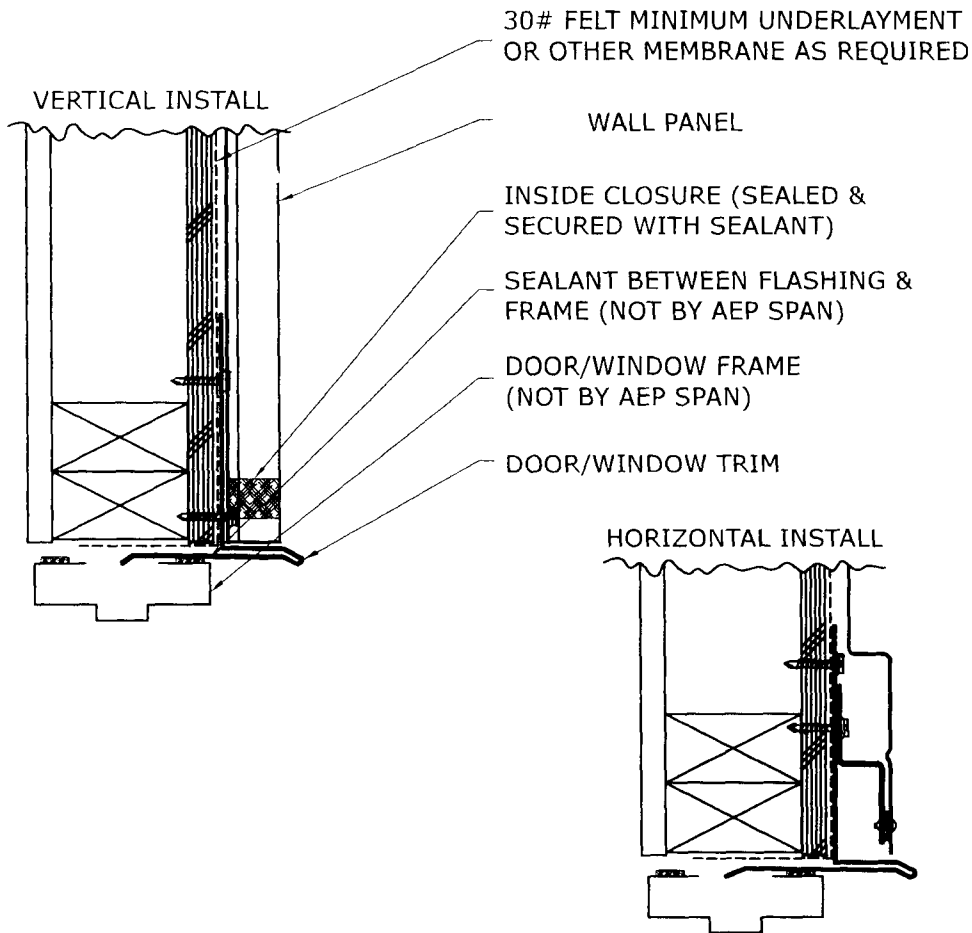
Door/ Window Trim (Head)



Door/Window Trim



Z-Metal

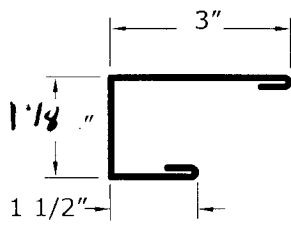




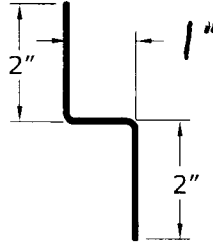
WESTERN STATES DECKING, INC.

901 W. Watkins • Phoenix, AZ 85007 • (602) 495-0048 • FAX: (602) 261-7726

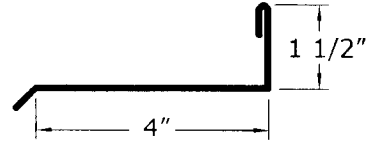
Door/ Window Trim (Jamb)



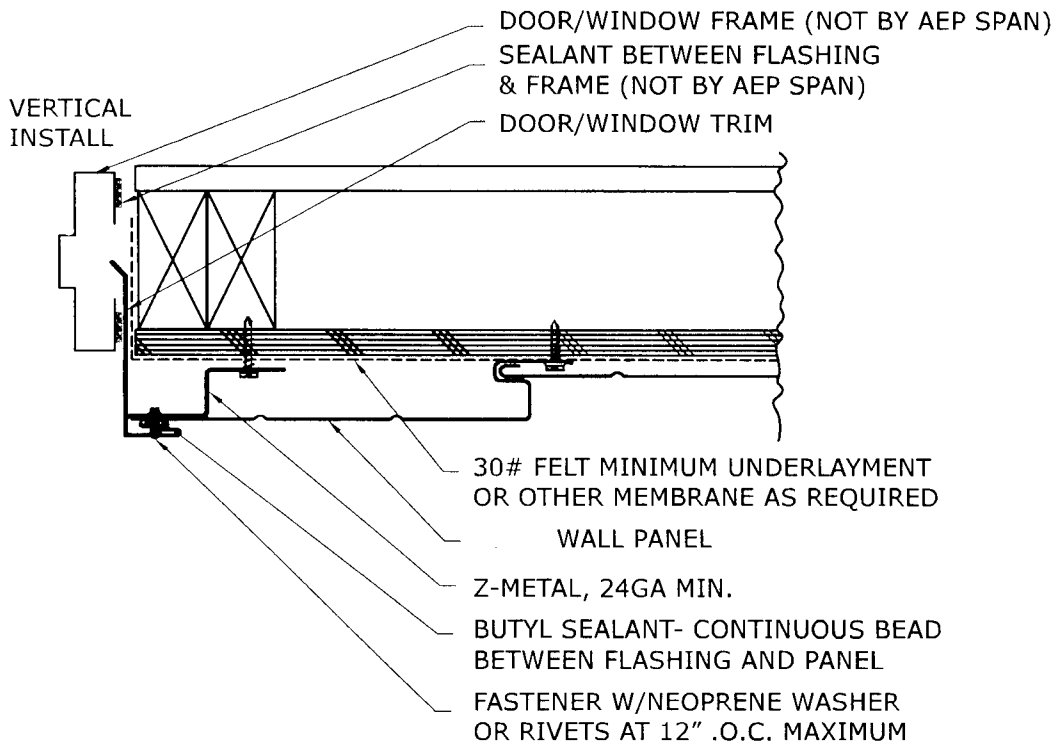
C-Metal



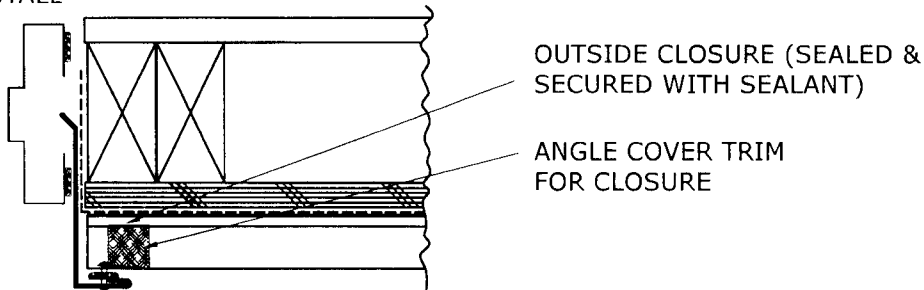
Z-Metal



Door/Window Trim



HORIZONTAL INSTALL

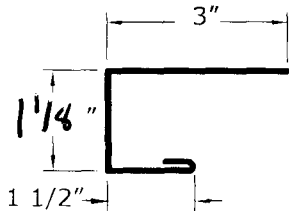




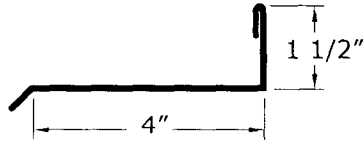
WESTERN STATES DECKING, INC.

901 W. Watkins • Phoenix, AZ 85007 • (602) 495-0048 • FAX: (602) 261-7726

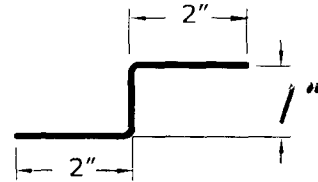
Door/ Window Trim (Sill)



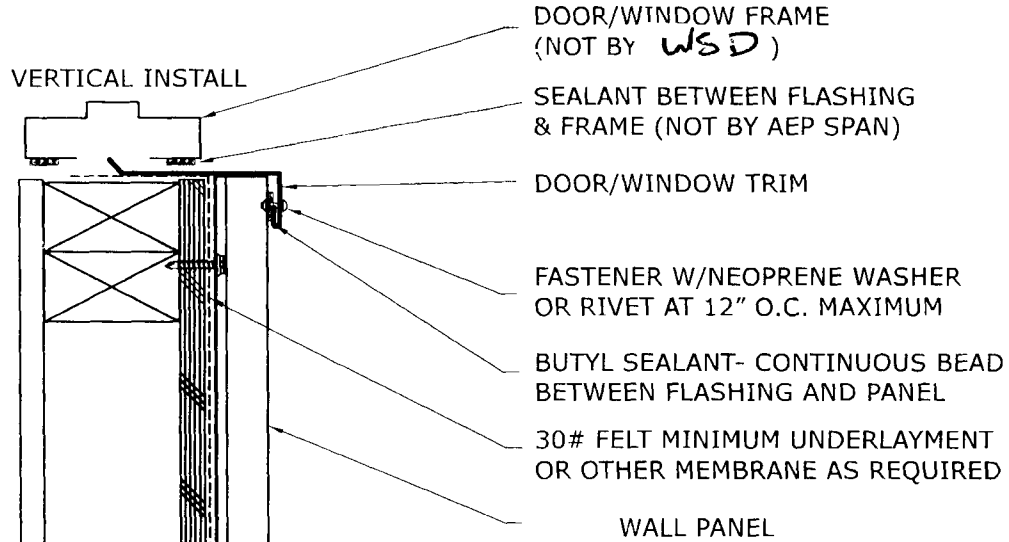
C-Metal



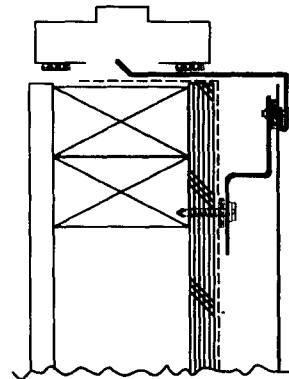
Door/Window Trim



Z-Metal



HORIZONTAL INSTALL

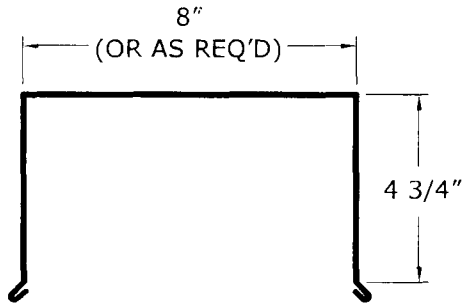




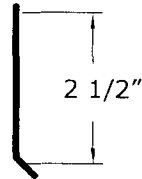
WESTERN STATES DECKING, INC.

901 W. Watkins • Phoenix, AZ 85007 • (602) 495-0048 • FAX: (602) 261-7726

Parapet Cap

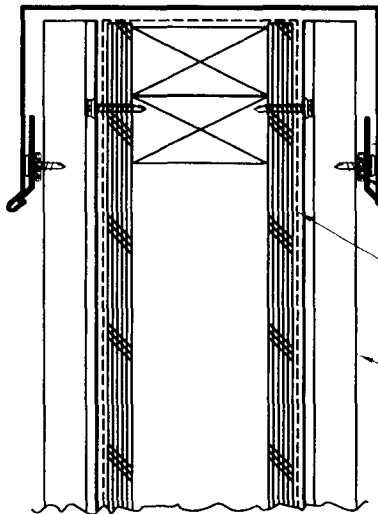


Parapet Cap



Continuous Cleat
(Optional)

VERTICAL INSTALL



- PARAPET CAP
- CONTINUOUS CLEAT
- PANCAKE HEAD FASTENER OR RIVET AT 12" O.C. MAXIMUM
- SEALANT BETWEEN FLASHING & PANEL (OPTIONAL)
- 30# FELT MINIMUM UNDERLAYMENT OR OTHER MEMBRANE AS REQUIRED
- WALL PANEL

HORIZONTAL INSTALL

