



Finishes You've Never Seen Before®

A606-4 (AKA CORTEN®)

SOFFIT, CEILINGS AND WALL PANELS

RUSTWALL®-12" FACE SIZE

1" Deep Narrow Width Concealed Fastener Wall Cladding System

Available Materials: Aluminum, Copper, Corten/A606-4, Steel

Available Finishes: Bare Steel, Galvalume®/Zincalume®, Galvanized, PVDF, SMP Painted



View Product

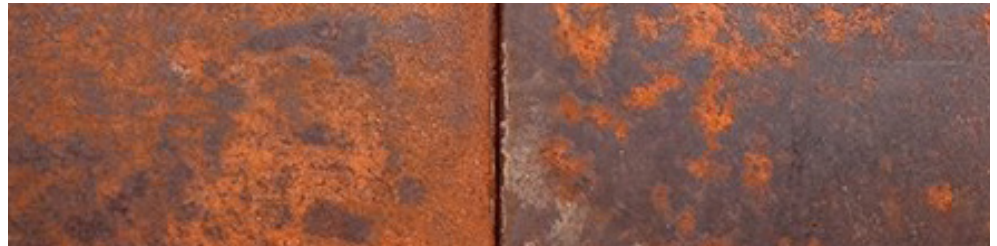
SPECIFICATIONS:

Profile Type:	Rustwall®	Rib Height:	1"
Face Size:	12"	Warranty:	Sold AS IS – No Warranty
Available Reveals:	<ul style="list-style-type: none"> • NR - No Reveal • 1.0 - 1" Reveal • 2.0 - 2" Reveal • 3.0 - 3" Reveal 	Available Gauges:	22
		Substrate:	A606-4 (aka Corten®)
		Finish:	A606-4 (aka Corten®)
		Fasteners:	Concealed
		Panel Length:	1' to 52'
Overall Width		Installation:	Can be installed over a solid substrate - vertical or horizontal.
Standard:	12", 14", 16", 18"		
Custom Widths Available:	Up to 22" max		

APPLIES TO THE FOLLOWING COLORS/FINISHES:

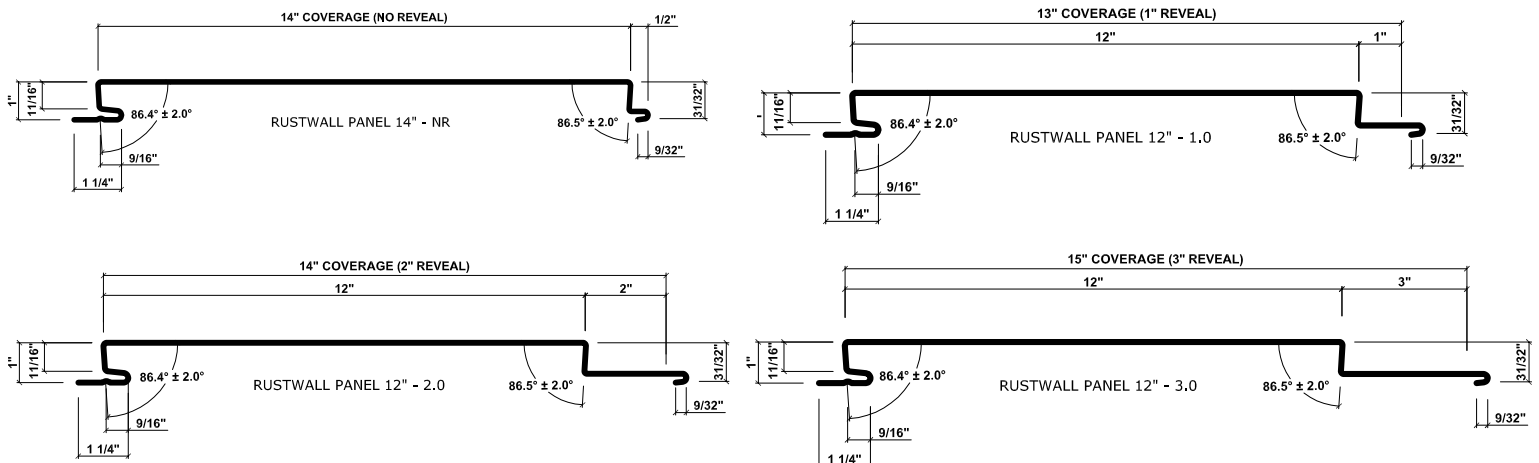
- A606-4 (aka Corten®)

***Material does not arrive pre-rusted.
Panel will rust naturally with exposure to the weather. Use stainless steel screws with a painted brown screw head for installing the panels.



Shown in A606-4 (aka Corten®)

PROFILE:



Colors represented on this profile sheet may not match actual material. All colors should be verified using an actual metal color sample.

Rev. 02.11.25

Phoenix: ☎ (602) 495-0048 ✉ sales@westernstatesmetalroofing.com | **Washington:** ☎ (509) 418-2833 ✉ washington-wsmr@westernstatesmetalroofing.com

Tucson: ☎ (520) 574-4247 ✉ tucsonsales@westernstatesmetalroofing.com | **Texas:** ☎ (972) 843-4343 ✉ texas-sales@westernstatesmetalroofing.com



Finishes You've Never Seen Before®

A606-4 (AKA CORTEN®)

SOFFIT, CEILINGS AND WALL PANELS

RUSTWALL®-14" FACE SIZE

1" Deep Narrow Width Concealed Fastener Wall Cladding System

Available Materials: Aluminum, Copper, Corten/A606-4, Steel

Available Finishes: Bare Steel, Galvalume®/Zincalume®, Galvanized, PVDF, SMP Painted



View Product

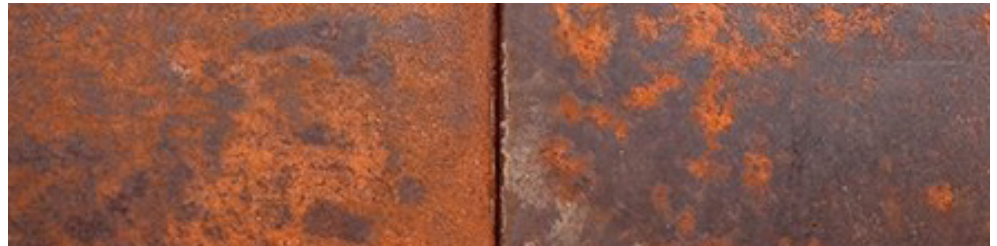
SPECIFICATIONS:

Profile Type:	Rustwall®	Rib Height:	1"
Face Size:	14"	Warranty:	Sold AS IS – No Warranty
Available Reveals:	<ul style="list-style-type: none"> • NR - No Reveal • 1.0 - 1" Reveal • 2.0 - 2" Reveal • 3.0 - 3" Reveal 	Available Gauges:	22
		Substrate:	A606-4 (aka Corten®)
		Finish:	A606-4 (aka Corten®)
		Fasteners:	Concealed
		Panel Length:	1' to 52'
Overall Width		Installation:	Can be installed over a solid substrate - vertical or horizontal.
Standard:	12", 14", 16", 18"		
Custom Widths Available:	Up to 22" max		

APPLIES TO THE FOLLOWING COLORS/FINISHES:

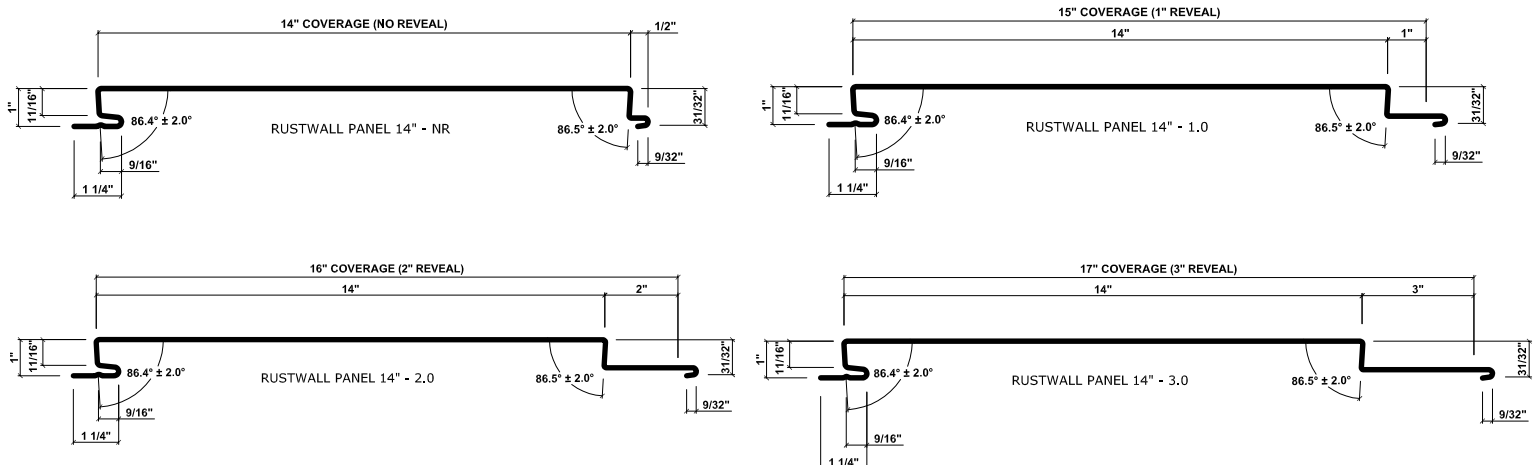
- A606-4 (aka Corten®)

***Material does not arrive pre-rusted.
Panel will rust naturally with exposure to the weather. Use stainless steel screws with a painted brown screw head for installing the panels.



Shown in A606-4 (aka Corten®)

PROFILE:



Colors represented on this profile sheet may not match actual material. All colors should be verified using an actual metal color sample.

Rev. 02.11.25

Phoenix: ☎ (602) 495-0048 ✉ sales@westernstatesmetalroofing.com | **Washington:** ☎ (509) 418-2833 ✉ washington-wsmr@westernstatesmetalroofing.com

Tucson: ☎ (520) 574-4247 ✉ tucsonsales@westernstatesmetalroofing.com | **Texas:** ☎ (972) 843-4343 ✉ texas-sales@westernstatesmetalroofing.com



Finishes You've Never Seen Before®

A606-4 (AKA CORTEN®)

SOFFIT, CEILINGS AND WALL PANELS

RUSTWALL®-16" FACE SIZE

1" Deep Narrow Width Concealed Fastener Wall Cladding System

Available Materials: Aluminum, Copper, Corten/A606-4, Steel

Available Finishes: Bare Steel, Galvalume®/Zincalume®, Galvanized, PVDF, SMP Painted



View Product

SPECIFICATIONS:

Profile Type:	Rustwall®	Rib Height:	1"
Face Size:	16"	Warranty:	Sold AS IS – No Warranty
Available Reveals:	<ul style="list-style-type: none"> • NR - No Reveal • 1.0 - 1" Reveal • 2.0 - 2" Reveal • 3.0 - 3" Reveal 	Available Gauges:	22
Overall Width		Substrate:	A606-4 (aka Corten®)
Standard:	12", 14", 16", 18"	Finish:	A606-4 (aka Corten®)
Custom Widths Available:	Up to 22" max	Fasteners:	Concealed
		Panel Length:	1' to 52'
		Installation:	Can be installed over a solid substrate - vertical or horizontal.

APPLIES TO THE FOLLOWING COLORS/FINISHES:

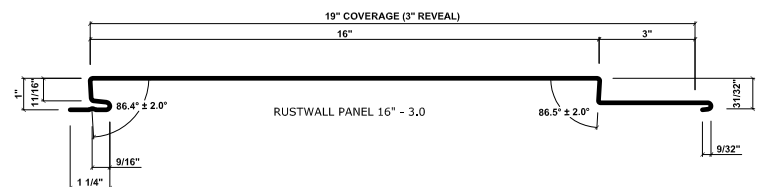
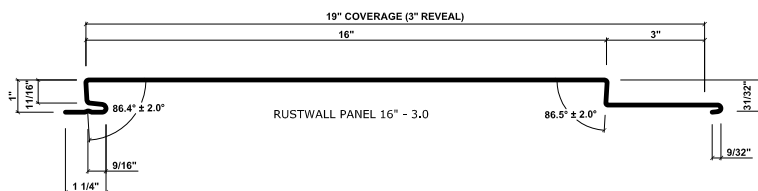
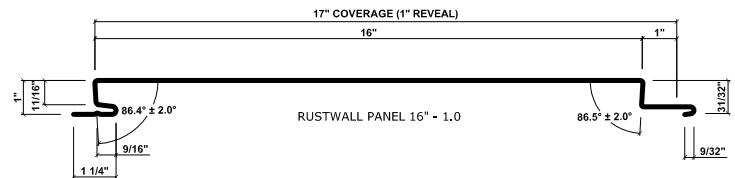
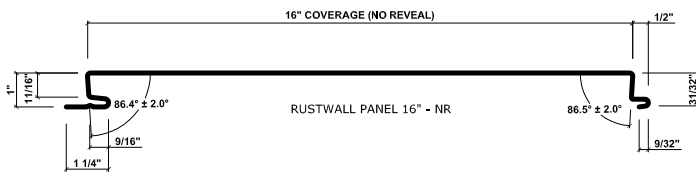
- A606-4 (aka Corten®)

***Material does not arrive pre-rusted. Panel will rust naturally with exposure to the weather. Use stainless steel screws with a painted brown screw head for installing the panels.



Shown in A606-4 (aka Corten®)

PROFILE:



Colors represented on this profile sheet may not match actual material. All colors should be verified using an actual metal color sample.

Rev. 02.11.25

Phoenix: ☎ (602) 495-0048 ✉ sales@westernstatesmetalroofing.com | Washington: ☎ (509) 418-2833 ✉ washington-wsmr@westernstatesmetalroofing.com

Tucson: ☎ (520) 574-4247 ✉ tucsonsales@westernstatesmetalroofing.com | Texas: ☎ (972) 843-4343 ✉ texas-sales@westernstatesmetalroofing.com



Finishes You've Never Seen Before®

A606-4 (AKA CORTEN®)

SOFFIT, CEILINGS AND WALL PANELS

RUSTWALL®-18" FACE SIZE

1" Deep Narrow Width Concealed Fastener Wall Cladding System

Available Materials: Aluminum, Copper, Corten/A606-4, Steel

Available Finishes: Bare Steel, Galvalume®/Zincalume®, Galvanized, PVDF, SMP Painted



View Product

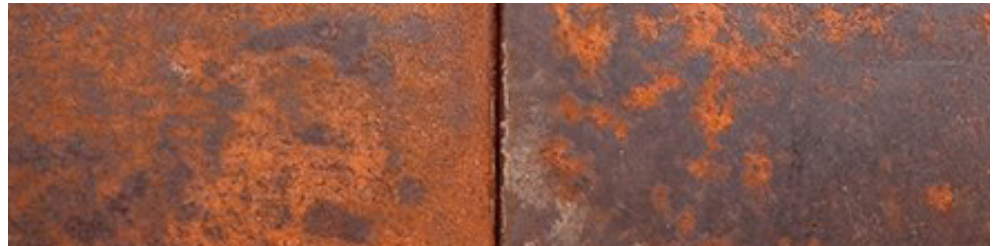
SPECIFICATIONS:

Profile Type:	Rustwall®	Rib Height:	1"
Face Size:	18"	Warranty:	Sold AS IS – No Warranty
Available Reveals:	<ul style="list-style-type: none"> • NR - No Reveal • 1.0 - 1" Reveal • 2.0 - 2" Reveal • 3.0 - 3" Reveal 	Available Gauges:	22
		Substrate:	A606-4 (aka Corten®)
		Finish:	A606-4 (aka Corten®)
		Fasteners:	Concealed
		Panel Length:	1' to 52'
Overall Width		Installation:	Can be installed over a solid substrate - vertical or horizontal.
Standard:	12", 14", 16", 18"		
Custom Widths Available:	Up to 22" max		

APPLIES TO THE FOLLOWING COLORS/FINISHES:

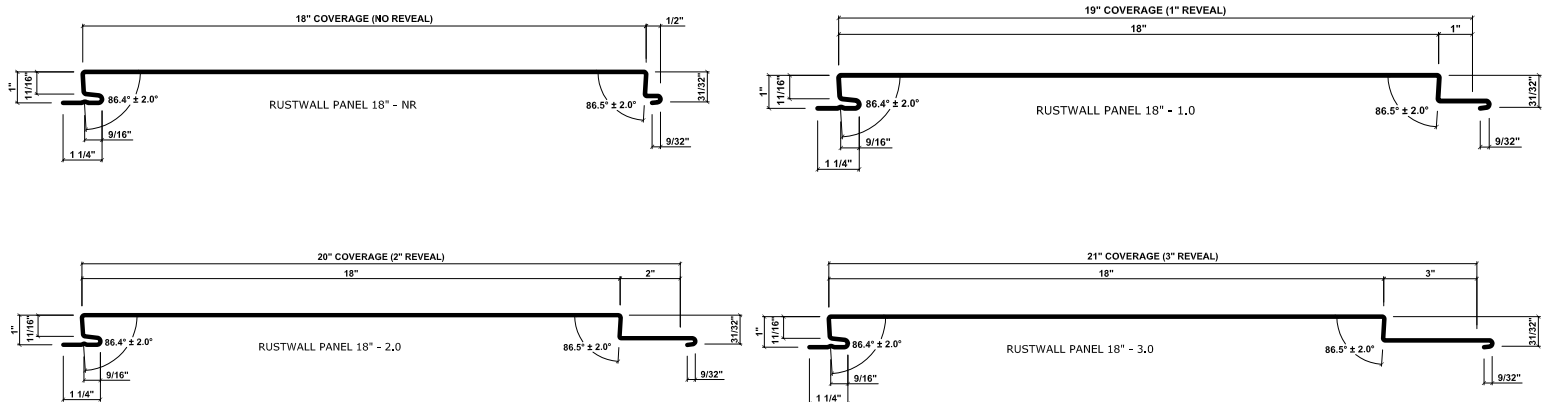
- A606-4 (aka Corten®)

***Material does not arrive pre-rusted.
Panel will rust naturally with exposure to the weather. Use stainless steel screws with a painted brown screw head for installing the panels.



Shown in A606-4 (aka Corten®)

PROFILE:



Colors represented on this profile sheet may not match actual material. All colors should be verified using an actual metal color sample.

Rev. 02.11.25

Phoenix: ☎ (602) 495-0048 ✉ sales@westernstatesmetalroofing.com | Washington: ☎ (509) 418-2833 ✉ washington-wsmr@westernstatesmetalroofing.com

Tucson: ☎ (520) 574-4247 ✉ tucsonsales@westernstatesmetalroofing.com | Texas: ☎ (972) 843-4343 ✉ texas-sales@westernstatesmetalroofing.com